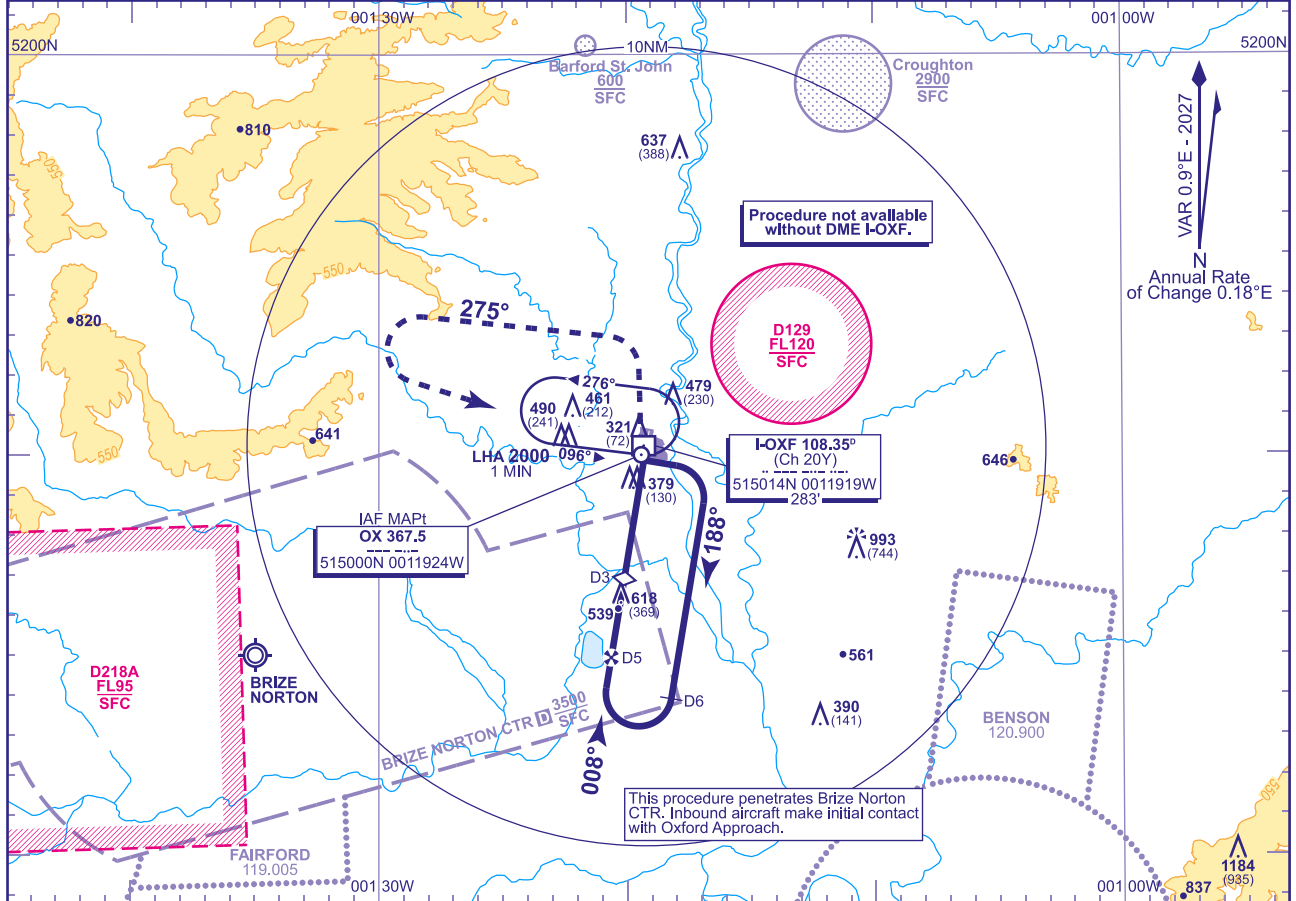


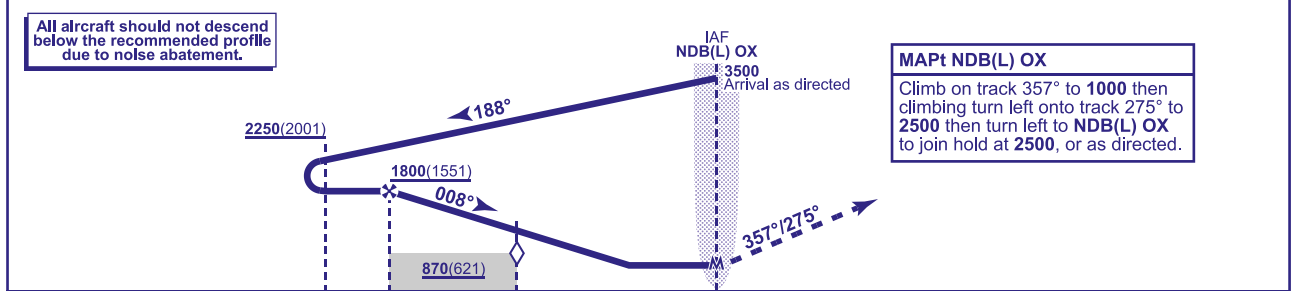
INSTRUMENT APPROACH CHART - ICAO

OXFORD
NDB(L)
RWY 01
(ACFT CAT A,B,C)

	APP 125.090	OXFORD APPROACH	AD ELEVATION 263	NDB(L) RWY 01 (ACFT CAT A,B,C)
	TWR 133.430	OXFORD TOWER	THR ELEVATION 249	
	RAD 125.090	OXFORD RADAR	OBSTACLE ELEVATION 1184 AMSL (935) (ABOVE THR)	
	119.980	OXFORD DIRECTOR (see note 3)		
	121.955	OXFORD GROUND (see note 3)		
	ATIS 136.230	OXFORD ATIS	BEARINGS ARE MAGNETIC	TRANSITION ALTITUDE 6000



RECOMMENDED PROFILE Gradient 4.94%, 300FT/NM			
DME I-OXF	5	4	3(SDF)
ALT(HGT)	1800(1551)	1480(1231)	1180(931)



Aircraft Category				DME I-OXF zero ranged to THR RWY 01					
A	B	C		Rate of descent	G/S KT	160	140	120	100
OCA (OCH)	Procedure	700(451)	700(451)	700(451)	FT/MIN	800	700	600	500
VM(C)OCA (OCH AAL)	Total Area	800(537)	800(537)	1100(837)					

NOTE 1 Aircraft will normally be required to hold not lower than 3500 or equivalent FL.
2 Entry into racetrack procedure restricted to Sector 3 entry from inbound leg (096°M) of holding pattern.
3 Only when directed by ATC

WARNING 1 The established NDB hold is impacted by EGD129 activity. ATC Oxford will co-ordinate the use of the hold in association with the instrument procedures with regard to promulgated activity in EGD129.

CHANGE (3/26): EGD218A VERTICAL LIMITS REVISED.